



## PRODUCT SHEET

2020 09 VER.01



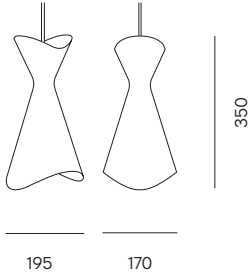
# NINOTCHKA

by Bent Karlby <sup>1953</sup>

When giving shape to the NINOTCHKA pendant, Bent Karlby took note of an eye-catching hat, worn by the Swedish Hollywood star Greta Garbo in her 1939 film, Ninotchka. Art, fashion and popular culture have a long tradition of inspiring each other and this lamp is yet another great example. The pendant is a genuine and easily recognizable design icon. The organic body with its asymmetrical drapes ensures functional direct downlight and a diffused ambient uplight.



## NINOTCHKA 195



### Category

Pendant

### Type of light

Direct

### Purpose

Task

### Materials

Matt painted steel

### Colours

White

Black

Red

### Weight

0,75 kg

### Direction of light source

Downwards

### Light source

One bulb needed

Not included

### Recommended bulb

Philips LED 8W

806 lumen

### Socket size

E27

### Max wattage

40 W

### Canopy

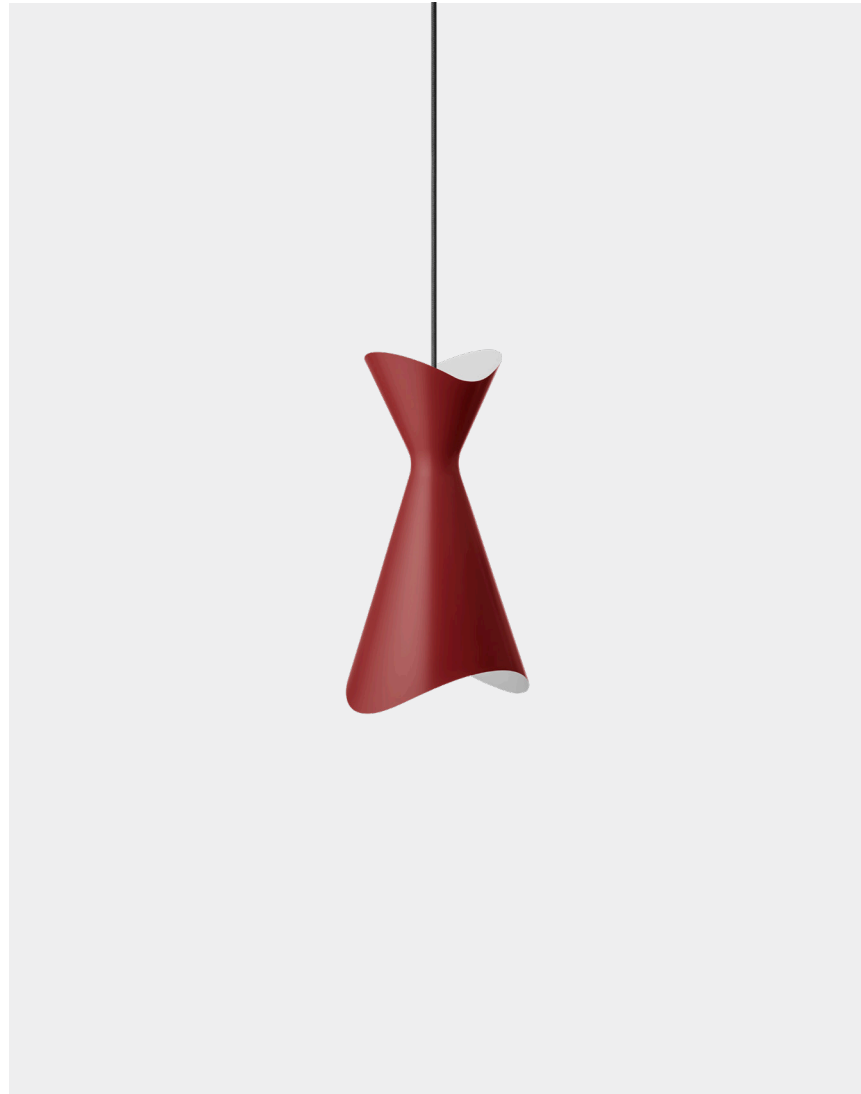
Standard

### Cord

Black textile

White textile <sup>WHITE</sup>

3 m



See full product description at  
[lyfa.com/collections/ninotchka](http://lyfa.com/collections/ninotchka)

### COLOURS

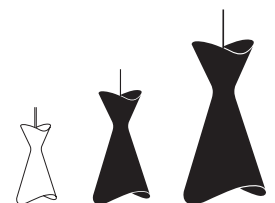


### CONCEPT AND CRAFTSMANSHIP

The original NINOTCHKA was red with a contrasting white-lacquered inside. Today, the charming pendant also comes in white and black. The asymmetrical lamp is crafted from a single shade and is available in three different sizes.

### LIGHTSCAPE

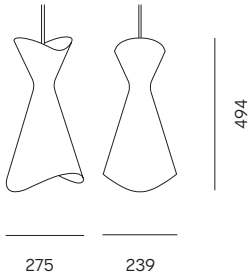
The open-top design principle ensures diffused upward lighting while the downlight is even and direct, which makes for a functional as well as ambient lighting experience. The organic body and asymmetric drapes are reinforced by the contrasting white inside, allowing for a varied play with light and shadow depending on the viewer's position.



195



## NINOTCHKA 275



### Category

Pendant

### Type of light

Direct

### Purpose

Task

### Materials

Matt painted steel

### Colours

White

Black

Red

### Weight

0,9 kg

### Direction of light source

Downwards

### Light source

One bulb needed

Not included

### Recommended bulb

Philips LED 11W

1055 lumen

### Socket size

E27

### Max wattage

60 W

### Canopy

Standard

### Cord

Black textile

White textile <sup>WHITE</sup>

3 m



See full product description at  
[lyfa.com/collections/ninotchka](https://lyfa.com/collections/ninotchka)

### COLOURS

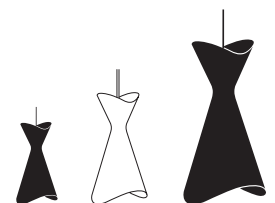


### CONCEPT AND CRAFTSMANSHIP

The original NINOTCHKA was red with a contrasting white-lacquered inside. Today, the charming pendant also comes in white and black. The asymmetrical lamp is crafted from a single shade and is available in three different sizes.

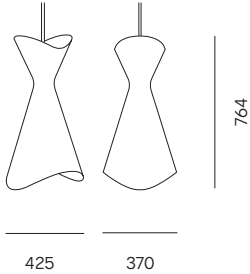
### LIGHTSCAPE

The open-top design principle ensures diffused upward lighting while the downlight is even and direct, which makes for a functional as well as ambient lighting experience. The organic body and asymmetric drapes are reinforced by the contrasting white inside, allowing for a varied play with light and shadow depending on the viewer's position.





## NINOTCHKA 425



### Category

Pendant

### Type of light

Direct

### Purpose

Task

### Materials

Matt painted steel

### Colours

White

Black

Red

### Weight

2 kg

### Direction of light source

Downwards

### Light source

One bulb needed

Not included

### Recommended bulb

Philips LED 13W

1521 lumen

### Socket size

E27

### Max wattage

60 W

### Canopy

Standard

### Cord

Black textile

White textile <sup>WHITE</sup>

3 m



See full product description at  
[lyfa.com/collections/ninotchka](http://lyfa.com/collections/ninotchka)

### COLOURS

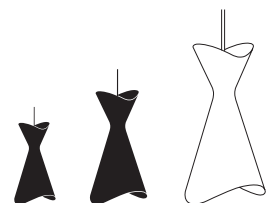


### CONCEPT AND CRAFTSMANSHIP

The original NINOTCHKA was red with a contrasting white-lacquered inside. Today, the charming pendant also comes in white and black. The asymmetrical lamp is crafted from a single shade and is available in three different sizes.

### LIGHTSCAPE

The open-top design principle ensures diffused upward lighting while the downlight is even and direct, which makes for a functional as well as ambient lighting experience. The organic body and asymmetric drapes are reinforced by the contrasting white inside, allowing for a varied play with light and shadow depending on the viewer's position.





# LIGHTSCAPE GOVERNOR

## DIRECT LIGHTING

Direct lighting is focused illumination with an exposed light source. It enhances the visibility and directs the light to where it is needed. By highlighting objects and surfaces, direct lighting is useful for specific purposes, like reading a book or prepping food in the kitchen. Choosing the correct light source is vital to avoid glare and lighting that is too harsh.

## INDIRECT LIGHTING

Indirect lighting is ideal for creating an ambient setting as illumination relies on reflected, indirect light from the source. The light is emitted in different directions, which adds a delicate brightness, while the concealed light source ensures a glare-free experience. Choosing the correct light source is important to provide a sufficient level of illumination.

## DIFFUSED LIGHTING

Diffused lighting is non-directional; a soft, scattered light that is not directed at particular objects or surfaces. The light passes through a translucent surface, creating a softer appearance that serves well as overall room illumination or to create an ambient setting. Choosing the correct light source is essential to avoid unwanted patterns on the illuminated surfaces.


## PURPOSE

Lighting a room is all about a comfortable level of illumination, which is the result of a complex interplay between the room, atmosphere, light, and form. Different types of light entail different purposes. Based on our collection, we differentiate between three distinctive purposes: task, ambient and decorative lighting.

**DIRECT**

**INDIRECT**

**DIFFUSED**

### TASK

A supportive light to better accomplish a task or specific activity

### AMBIENT

An overall, soft light to set or improve the atmosphere of the room

### DECORATIVE

A delicate light to draw attention and add distinction to a room