

Grand Bench

Designed by Emil Thorup



Description

The Grand Bench makes a versatile addition to any space. Envisioned to fit the HANDVÄRK dining tables or to complement a spacious hallway.

Designer & Year

Emil Thorup 2019

Type

Bench

Use

Indoor

Country of Production

Lithuania

Pre assembled

No

Materials and Production Process

Frame - TIG welded steel tubes with powder coat finish. Optional solid brass details that will age naturally over time. Plastic Glides
Top - FSC Plywood with cut flame retardant foam, duck feathers and wadding. Leather upholstery with black cotton backing.

Delivery

2 Packages

Total Gross Weight: 22.3 kg

Total Volume: 0.33 m³

Specifications

Shade and vegetal leather items always made to order.

Material needed for custom upholstery:

2.5m or 1/2 leather hide

Custom Changes: Upon Request

Warranty: 2 years

Leather Options



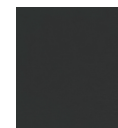
Black
(Stocked)



Light Concrete
20294



Basalt
20297



Slade
20299



Raw Siena
20290



Sand
20298



Ochre
20291



Ebony
20293



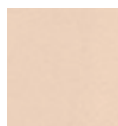
Pitch Black
20296



Raw Umber
20292



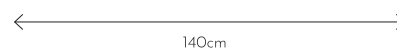
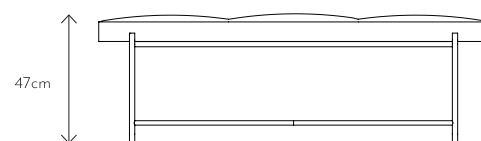
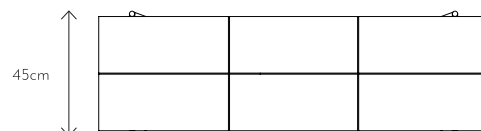
Khaki
20289



Vegetal
Aniline



Brass Details



Weight - 20kg

HANDVÄRK

HANDVÄRK ApS

Aarhusgade 136A Nordhavn Denmark 2150

info@handvark.com | www.handvark.com